

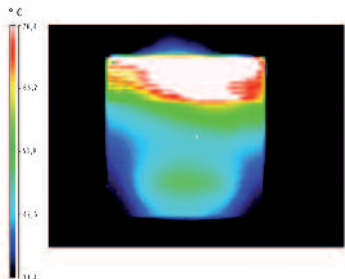
Odyssee Electronic

Electric heaters

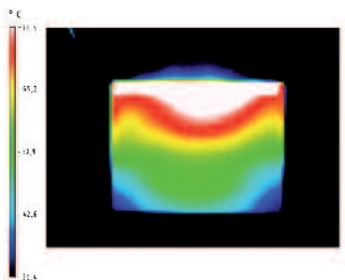
NEW GENERATION HD

HOMOGENOUS HEAT • DESIGN

НОВЫЙ ДИЗАЙН



Traditional convector heat diffusion



Odyssee homogenous heat diffusion

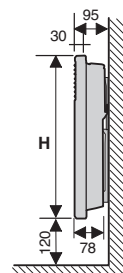


Ratings and dimensions

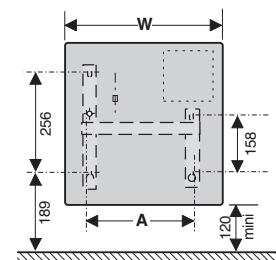
Rating (W)	Depth with wall bracket	Width (mm) W	Height (mm) H	A	Weight (kg)
500/750	95	520	450	269	3,5
1000	95	595	450	343	3,8
1250	95	740	450	491	4,5
1500	95	889	450	565	6
2000	95	1035	450	787	7

CE Classe II IP 24 

Side view



Horizontal model



Front views showing bracket position.

Minimum clearances required: 500mm in front and above; 150mm each side.