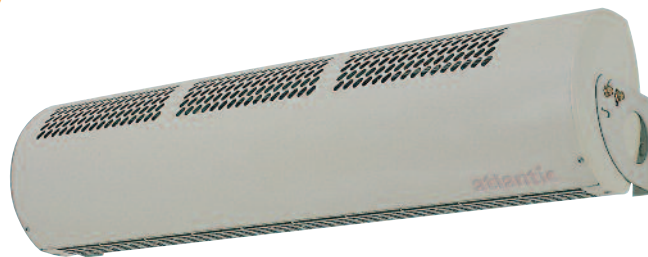


# Air curtains visible

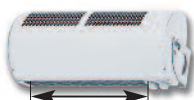
## Electric heaters



(2/4 kW, 3/6kW, 5/10kW) - wall-mounting



### Visible models



(65 cm) Air Curtain 2/4



(90 cm) Air Curtain 3/6



(110 cm) Air Curtain 5/10



## Ratings and dimensions

Visible models				Wall-mounting			Ceiling-mounting		
Power (kW)	Voltage (V)	Air flow (m <sup>3</sup> /h)	Weight (kg)	Length (mm)	Height (mm)	Width (mm)	Length (mm)	Height (mm)	Width (mm)
2/4	230 V~	180/260	7.5	650	208	175	650	225	150
3/6	230 V~/400 V 3N	260/390	10.2	900	208	175	900	225	150
5/10	400 V~ 3N	950/1350	24	1105	292	259	1105	318	229

### Accessories

Control unit (alone) for 3/6 kW visible models

Control unit (alone) for 5/10 kW visible models

**CE** Classe I IP 20

## Accessories

- **Control unit** (for 3/6 kW visible model):
  - Temperature regulation knob
  - 6-position switch:
    - Low-speed air blowing, fan-only mode
    - High-speed air blowing, fan-only mode
    - Half-power heating, low-speed air blowing
    - Half-power heating, high-speed air blowing
    - Full power heating, high-speed air blowing
    - Off
- **Control unit** (for 5/10 kW visible models):
  - 6-position switch:
    - Low-speed air blowing, fan-only mode
    - High-speed air blowing, fan-only mode
    - Half-power heating, low-speed air blowing
    - Half-power heating, high-speed air blowing
    - Full power heating, high-speed air blowing
    - Off

