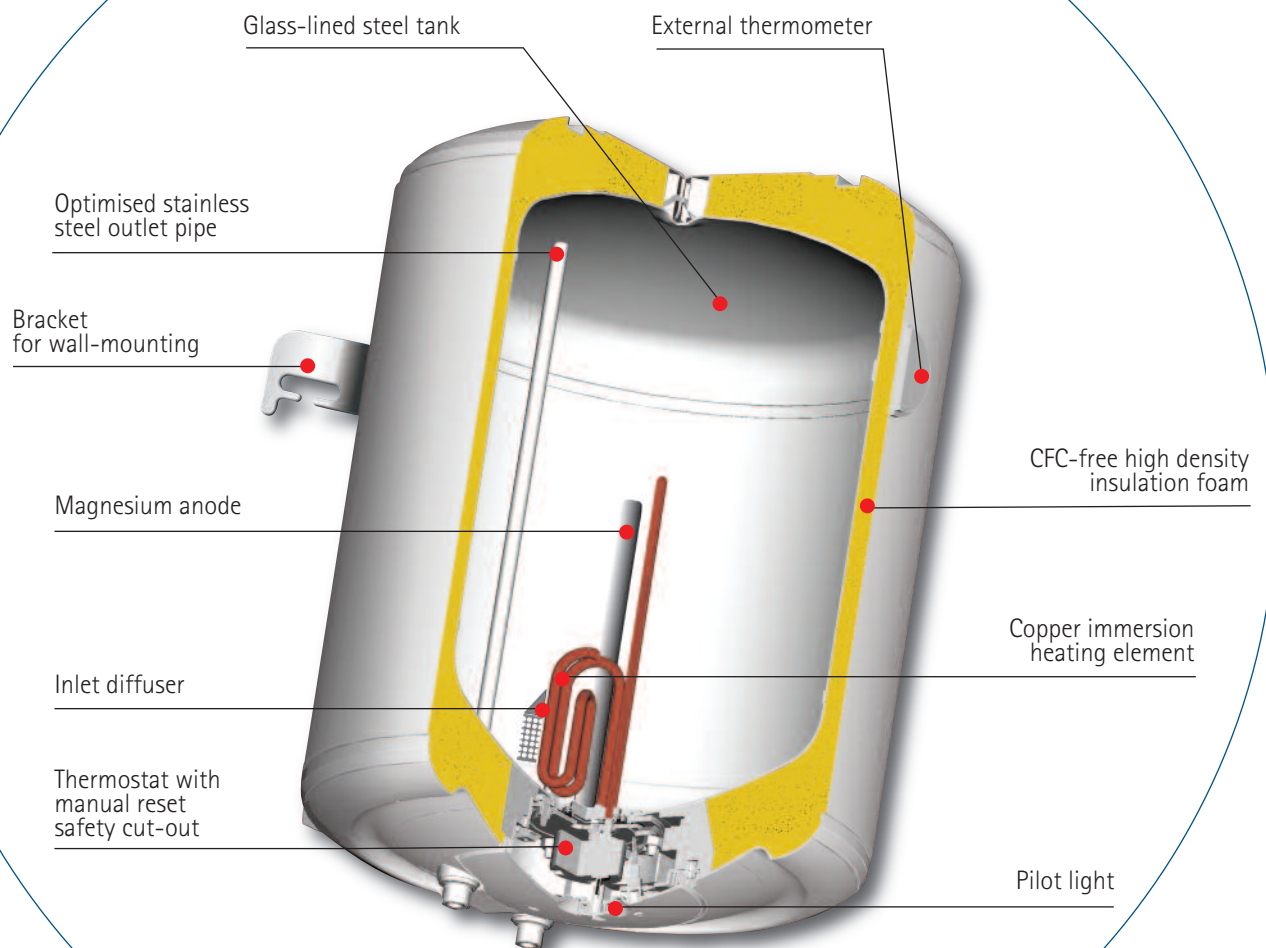


# E.series

## Water heaters





## Ratings and dimensions

### Vertical wall mounted range

Capacity (L)	Output (W) 230 V	Voltage (V)	Energy Consumption (kWh/24h at 65°C)	Heat-up time at 60°C (Δt=20°C)	Heat-up time at 60°C (Δt=50°C)
30	1200	230 (220-240)	0,80	0h36	1h30
50	1500	230 (220-240)	0,88	0h48	2h00
80	1500	230 (220-240)	1,32	1h17	3h14
100	1500	230 (220-240)	1,62	1h36	4h02
120	1500	230 (220-240)	1,73	1h41	4h47

Capacity (L)	Dimensions (mm)							Manhole opening (Ø)	Weight empty (kg)
	A	B	C	D	E	F	G		
30	417	433	235	451	165	100 to 280	240	72 mm	14
50	559	433	380	451	165	100 to 280	240	72 mm	16
80	791	433	590	451	165	100 to 280	240	72 mm	20
100	948	433	740	451	165	100 to 280	240	72 mm	22
120	1111	433	906	451	165	100 to 280	240	72 mm	29

(Depending on models)

(For other standards, consult us)

### Horizontal wall mounted range

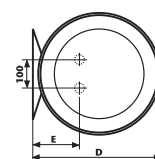
Capacity (L)	Output (W) 230 V	Voltage (V)	Energy Consumption (kWh/24h at 65°C)	Heat-up time at 60°C (Δt=20°C)	Heat-up time at 60°C (Δt=50°C)
50	1500	230 (220-240)	1,10	0h40	1h40
80	1500	230 (220-240)	1,34	1h06	2h45
100	1500	230 (220-240)	1,85	1h28	3h40

Capacity (L)	Dimensions (mm)						Manhole opening (Ø)	Weight empty (kg)
	A	B	C	D	E	F		
50	542	433	170	451	234	343	72 mm	16
80	774	433	360	451	234	343	72 mm	20
100	931	433	510	451	234	343	72 mm	22

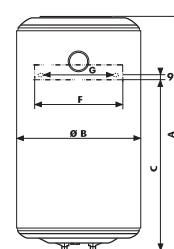
(Depending on models)

(For other standards, consult us)

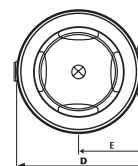
Top view



Vertical model



Top view



Horizontal model

