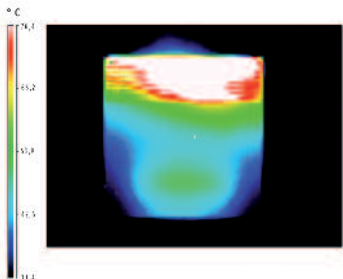
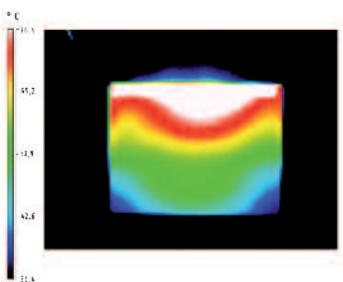


# Odyssee Mechanical

## Electric heaters



Traditional convector heat diffusion



Odyssee homogenous heat diffusion

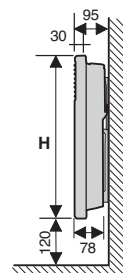


### Ratings and dimensions

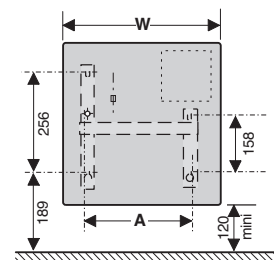
Rating (W)	Depth with wall bracket	Width (mm) W	Height (mm) H	A	Weight (kg)
500/750/1000	95	520	450	269	3,5
1250	95	666	450	320	4
1500	95	814	450	565	5,3
2000	95	962	450	767	6,5

CE Classe II IP 24  

Side view



Horizontal model



Front views showing bracket position.

Minimum clearances required: 500mm in front and above; 150mm each side.